



## ACTIVATION AND SET-UP TIPS



### **What is your phone model?**

Check if your phone is included in the list of compatible devices:  
<https://t.ijmio.jp/en/dv/>

### **Is your phone unlocked?**

If no, you should contact your network provider and ask to unlock the phone.

### **Are you still in flight mode ? Is the wifi turned off ?**

If cellular network doesn't show on the phone home screen, it could be because the phone is still on flight mode.

### **Is the cellular network and the roaming activated ?**

If cellular network doesn't show on the phone home screen, it could be because the cellular network **is not activated**.

### **Were you asked to enter a code?**

**Restart your phone** after entering the APN-settings. First enter the SIM **PIN code 0000**, then your personal phone code (if required).

### **Do you have a PDP Authentication Failure?**

Please reset and set up again the APN as written on the instruction manual.

### **Are you asked to enter a MCC code?**

If you are asked for a 3-digit MCC (Mobile Country Code) please type: **440**

### **Are you asked to enter a MNC code?**

If you are asked for a 2-digit MNC (Mobile Network Code) please type: **03**

### **Is your SIM card still not working?**

Call the assistance number open 24/7:  
**+81 (0)50-5835-2190**

### **Is there a fair usage clause (internet slowing down if too much data is used at once)?**

There is generally no problem with the internet on **UNLIMITED** packages.

However, the IJ SIM card uses the NTT Docomo network service, so in very rare cases, if the Docomo networking system slow down because of abnormal data usage, then there could be something like internet slowing down or interruption of the system for only a few minutes.

Check on the speed with an application such as "**SPEEDTEST**" and please contact us with the results of the tests and the SIM Card number.

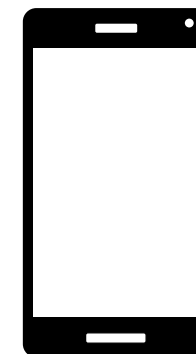
*Note that the activation server is under maintenance every Tuesday from 10 p.m. until Wednesday morning 9 a.m., Japan time.*

Japan Rail Pass

by

*Japan Experience*

*Far more than a trip*



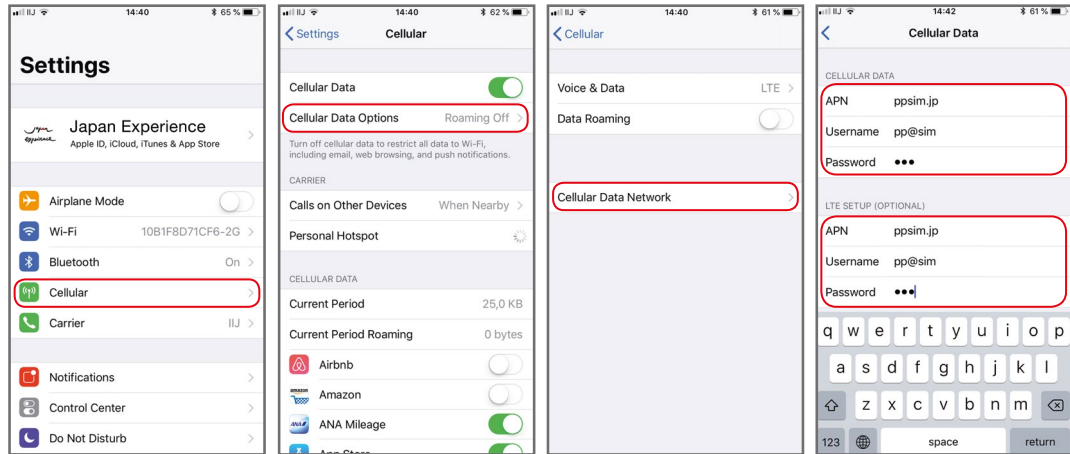
# Prepaid SIM CARD

# INSTRUCTIONS

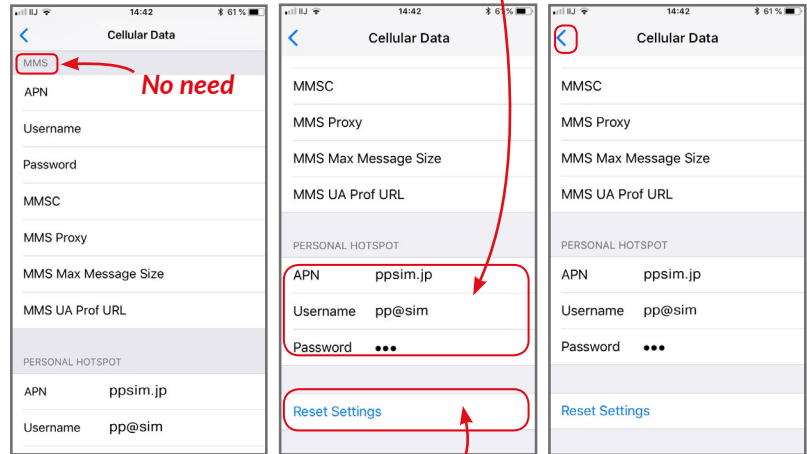


# IOS

- 1] Tap the settings icon on the Home screen.
- 2] Select [Cellular] and turn on [Enable 3G] or [Enable LTE].
- 3] Select [Cellular], and then select [APN Settings] or [Cellular Network].
- 4] Set the Cellular settings using the APN provided above.



APN	
Name	ppsim
APN	ppsim.jp
User name	pp@sim
Password	jpn
Authentication type	PAP or CHAP



# ANDROID

- 1] Select [Settings] on the main menu.
- 2] Select [Settings] - [Wireless & Networks] - [More...], and then select [Mobile networks].
- 3] Select [Access Point Names], and then select [New APN] from [+] or from the menu. Enter the APN, and authentication type provided above.
- 4] Select [Save] from the menu, then return to the APN list and select the APN that you set up.

